

# ASSEMBLY AND OPERATING GUIDE



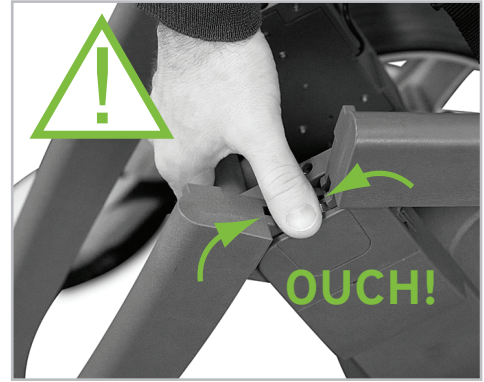
1



2



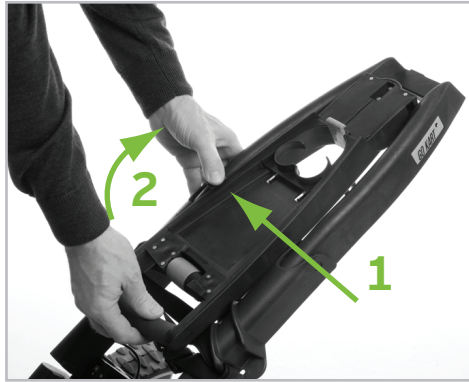
3



4



5



6



SEE THE VIDEO - [WWW.GOKART.CO.UK/VIDEO](http://WWW.GOKART.CO.UK/VIDEO), OR [WWW.GOKARTGOLF.COM/VIDEO](http://WWW.GOKARTGOLF.COM/VIDEO)

7



8



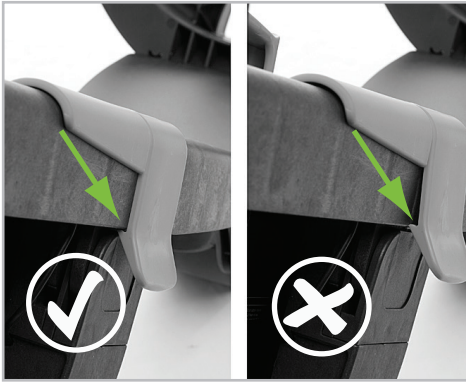
9



10



11

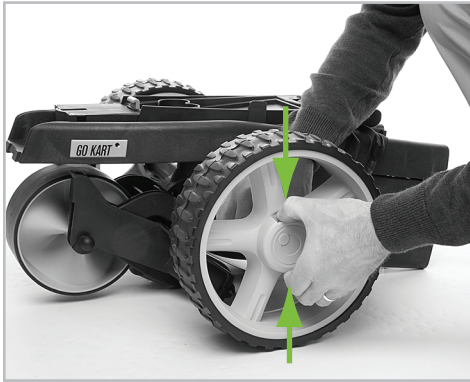


12



SEE THE VIDEO - [WWW.GOKART.CO.UK/VIDEO](http://WWW.GOKART.CO.UK/VIDEO), OR [WWW.GOKARTGOLF.COM/VIDEO](http://WWW.GOKARTGOLF.COM/VIDEO)

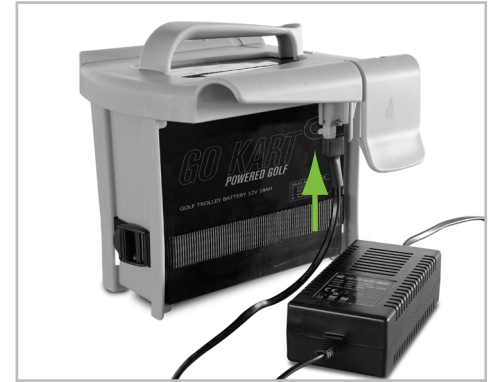
## REMOVE WHEELS



## STRETCH STRAP



## CHARGER



## FOLDING UP



## ESSENTIALS

### Standard Speed Control

1. Flick the on/off switch forward to the 'on' position.
2. Push the speed roller forward to go faster and turn it back to slow down.
3. When you stop, just turn the on/off switch to 'off' and leave the roller preset to your walking pace.
4. Turn on again and the GoKart will resume at your last speed.

### Automatic Speed Control

1. Turn on the on/off switch.
2. Hold the hand grip and start walking.
3. To slow down, hold the handle and walk slower.
4. To stop, hold the handle and stop.
5. You can let go of the handle when you're walking. The GoKart will continue at the same speed.

Please see 'GoKarting notes' for more info.

SEE THE VIDEO – [WWW.GOKART.CO.UK/VIDEO](http://WWW.GOKART.CO.UK/VIDEO), OR [WWW.GOKARTGOLF.COM/VIDEO](http://WWW.GOKARTGOLF.COM/VIDEO)

# GOKARTING NOTES

OK, Instruction books are never a gripping read, but before you rush out for your first game of GoKart golf, please take a good look at picture 11 overleaf. "I must visually check that both battery locking flaps are clipped under the frame of the GoKart" - this phrase must be repeated every time you assemble your trolley. Detention for anyone that forgets.

**You must not use force to locate the battery. If it doesn't drop into position first time, lift it slightly and try again. After a little practice, fitting the battery should be very easy. The best way to fit the battery is to stand in the position shown in picture 8.**

When your GoKart is delivered, the battery will be almost fully charged, but you must still charge it before its first use.

The battery will not fit until the top bag rest has been unfolded.

The trolley doesn't lock into the unfolded position until the battery is fitted. You cannot use the GoKart without a battery.

The GoKart 36 hole battery is a snug fit in the trolley frame. If the battery is lowered straight down, the webbing strap around the battery may get caught up. To avoid this, lower the battery behind where the battery sits first, and then slide it forward into position, see picture 9.

The battery must be recharged as soon as possible after you've played (definitely within 48 hours). This is very important.

If you have a 36 hole battery, you must still charge it at the end of the day, even if you've only played 18 holes (also very important).

The GoKart has an electronic safety circuit to protect the motor against overload. If the power cuts out, just turn the on/off switch to 'off' and then 'on' again. This resets the electronic gubbins.

Always stay close to the GoKart when it's moving – it can tip up when the going gets steep or bumpy.

You can safely clean the GoKart with soapy water, but you mustn't use a pressure washer.

**Please read the battery charging instructions overleaf. Or else...**

## More detail on the Automatic speed control

There are switches built into the handgrip. As you push or pull on the grip the GoKart will go faster or slower. This only requires the slightest pressure from you.

You don't need to squeeze or twist the grip.

One way to practise this is to take off the golf bag and lift the back wheels off the ground. Then push and pull on the hand grip. You'll feel the grip move slightly and hear the micro-switches operating (they're in the left side of the grip). You'll notice the wheels changing speed as you do this.

You will very quickly get used to the response of the Automatic. If you're familiar with a manually controlled electric trolley, it's similar to getting used to the feel of a new car.

Normally you don't use the on/off switch during the round. It's intended as an immobiliser if you leave the GoKart unattended.





# BATTERY CHARGING

## INSTRUCTIONS FOR CHARGING LEAD/ACID BATTERIES

**The Golden Rule is to always recharge the battery as soon as possible after every use - even if you run out of balls after three holes and walk in sulking; put the battery back on charge. You must not store a lead/acid battery partially charged. This will damage the battery.**

A 36 hole battery is only to be used for two rounds **on the same day**; you must not use it for two rounds, on one charge, over more than one day.

### Using the lead/acid charger:

1. Place the charger indoors on a hard surface in a well ventilated place.
2. Join the charger to the battery via the red/black connectors – before plugging the charger into the mains power.
3. Plug the charger into the mains. Light #1 will go RED.
4. Assuming the battery has been used, this light will stay on for several hours.
5. **You must check the red light comes on every time you charge the battery.** If it doesn't the battery will not get charged.
6. Leave the battery on charge for at least twelve hours. After this time light #1 will go out, and light #2 will show green, indicating that the battery is ready for use. Do not take the battery off charge for at least twelve hours, even though the green light will show before this time.
7. After twelve hours charging you have two options; leave it on charge with the mains connected (when the green light is on, the charger is using almost no power). If you'd rather turn off the charger, the second option is to turn off the mains and disconnect the battery from the charger.
8. **You must not leave the battery and charger connected with the mains off.**
9. **You must store the battery away from extreme temperatures.**
10. The battery will remain effectively fully charged off the charger for about one month. If you and your clubs are having some time apart, either leave the battery on charge, or charge it for at least 12 hours once a month.

## INSTRUCTIONS FOR CHARGING LITHIUM BATTERIES

The instructions for looking after a lithium battery are different from those for a lead/acid battery, so please forget what you know and read the following carefully.

You should always recharge the battery as soon as possible after use. Within 48 hours is fine.

**You should not leave the battery permanently on charge in between uses.** Generally, once the battery is charged, it should be disconnected from the charger, but it's OK to leave it on charge overnight and disconnect it in the morning. A lithium battery will remain fully charged off the charger for up to four weeks.

### Using the lithium charger:

1. Place the charger indoors on a hard surface in a well ventilated place.
2. Join the charger to the battery via the red/black connectors – before plugging the charger into the mains power.

3. Plug the charger into the mains. The charger light will show RED.
4. **You must check the red light comes on every time you charge the battery.** If it doesn't the battery will not get charged.
5. After between three and six hours the charger light will turn GREEN.
6. It's normal for the GREEN light to flash sometimes; the battery is still fully charged.
7. When the GREEN light is showing, the battery is fully charged and should be disconnected from the charger.
8. **You must not leave the battery and charger connected with the mains off.**
9. **You must store the battery away from extreme temperatures.**
10. If the battery is unused for up to four weeks once it's off charge, it does not need to be recharged before it's used again.
11. If the battery has been unused for longer than four weeks, recharge it the day before it's used again (and you need to get some more golf in).
12. If the battery is not going to be used for more than two months, ideally it should be stored approximately 50% charged. To do this, play 18 holes, charge it for two hours and then disconnect it from the charger. When you're going to use the battery again, put it on charge the day before you play.

We'd rather you didn't do yourself a mischief with the battery charger, so please note the following:

**Charger Safety instructions (lead/acid and lithium)**

The battery charger is for indoor use only. Do not allow the charger to become wet, or use it in a damp environment.

Do not cover the charger, or battery, when it's connected to the mains. Do not obstruct the airflow through the ventilation holes in the charger case.

Explosive gases can be given off when charging batteries. Place it on a hard surface in a well ventilated area.

Always disconnect the charger from the mains when connecting or disconnecting the battery and charger.

Do not cut or modify the output cable and do not use the charger if it, or the cables, become damaged.

Do not try to open the charger case.

For questions, repairs or service, please contact us (please keep these instructions for future reference).

# CONTACT

## **GoKart UK and Ireland**

T +44(0)1227 712288

F +44(0)1227 710808

E [go@gokart.co.uk](mailto:go@gokart.co.uk)

W [www.gokart.co.uk](http://www.gokart.co.uk)

GoKart Electric Golf  
52 Lakesview Business Park  
Canterbury, CT3 4JZ

## **GoKart Europe**

T +31(0)162 430080

F +31(0)162 425591

E [go@gokartgolf.com](mailto:go@gokartgolf.com)

W [www.gokartgolf.com](http://www.gokartgolf.com)

GoKart Europe b.v.  
De Wetering 37  
Oosterhout 4906CT  
The Netherlands

## **GoKart Australia**

T +61(0)3 8689 9505

E [go@gokartgolf.com.au](mailto:go@gokartgolf.com.au)

W [www.gokartgolf.com.au](http://www.gokartgolf.com.au)

## **GoKart South Africa**

T +27(0)11 238 7122

E [go@gokartgolf.co.za](mailto:go@gokartgolf.co.za)

W [www.gokartgolf.co.za](http://www.gokartgolf.co.za)